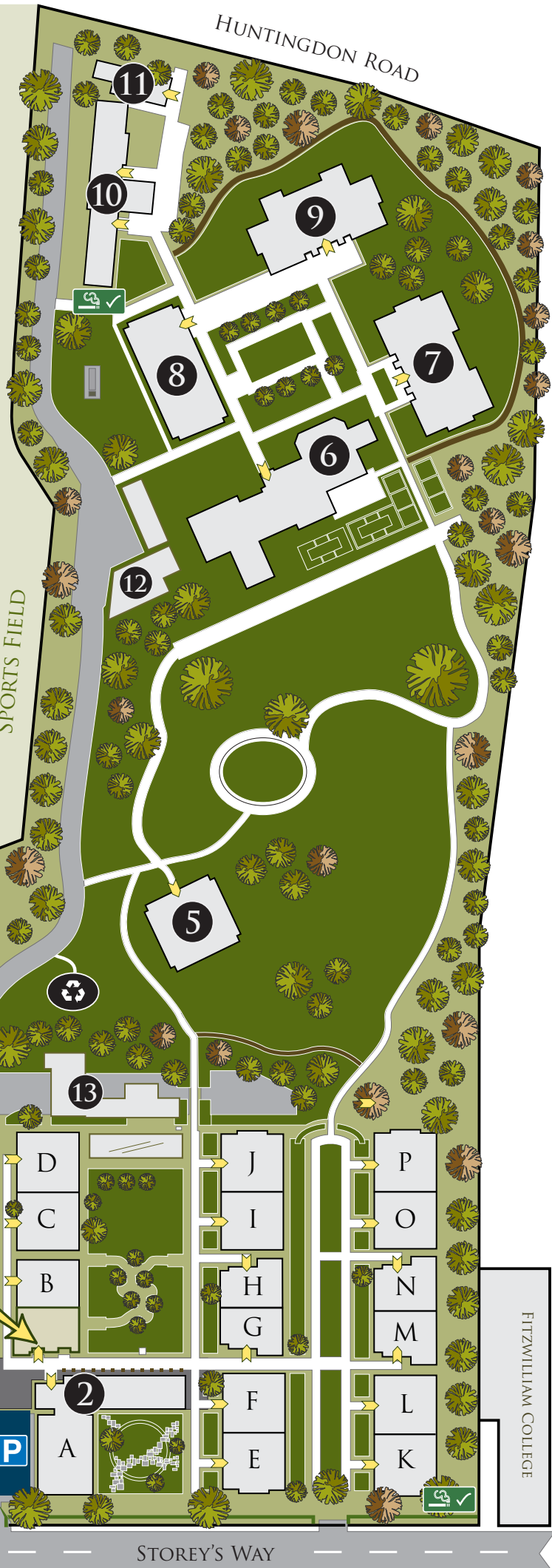




TRINITY HALL CAMBRIDGE

WYCHFIELD
CB3 0DZ

- 1 PORTERS' LODGE
- 2 DAVID SHEPPARD ROOM
- 3 COOTE HOUSE
- 4 PAVILION & SQUASH COURTS
- 5 HERRICK HOUSE
- 6 WYCHFIELD HOUSE
- 7 LAUNCELOT FLEMING HOUSE
- 8 BOULTON HOUSE
HOUSEKEEPER'S OFFICE
- 9 WALTER CHRISTIE HOUSE
- 10 DEAN HOUSE
- 11 LODGE COTTAGE
- 12 MAINTENANCE
- 13 GARDEN & GROUNDS H.Q.
- RECYCLING POINT



P AUTHORISED
PARKING ONLY
CB3 0DZ



Trinity Hall has installed
CCTV on these premises for
your safety and protection.

You are welcome to enjoy
the garden and grounds.

Please do not enter staircases
unless invited to do so.

This is a place of study, and
you are asked to respect its
tranquility.





WYCHFIELD

TRINITY HALL CAMBRIDGE

ADDRESS

Trinity Hall
Wychfield
Storey's Way
Cambridge

CB3 0DZ

PORTERS' LODGE

For all enquiries and questions, please visit the Porters at the Porters' Lodge or contact them via -

Tel: 01223 339029

www.trinhall.cam.ac.uk

porters@trinhall.cam.ac.uk



DIRECTIONS

There are maps and directions available for - Central Site, Bishop Bateman Court and WYNG Gardens.

Please look online (www.trinhall.cam.ac.uk) or ask the Porter at the Porters' Lodge.



WYCH ELM LEAF

Wych Elm Trees are very distinctive, and their presence led to the site being named 'Wychfield'.

The pattern of the Wych Elm leaf is echoed around the site to commemorate this.